



JAKA Zu 20 Cobot



Heavy payload



Long reach



High repeatability



High ingress protection

JAKA Zu 20 is our new collaborative robot, designed for tasks that require heavier payload and extended reach.

This cutting-edge robot builds upon the renowned qualities of the JAKA Zu series, offering simplicity, safety, reliability, and precision. With an impressive reach of 1780 mm and a payload capacity of 20 kg, it excels in heavy-duty and large-capacity applications. The IP65 protection adds an extra layer of reliability and resilience, ensuring the Zu 20 is also suitable for industrial environments where dust, dirt and water are present.

From machine tending to material handling, welding to dispensing, palletizing to packaging, the JAKA Zu 20 is your ultimate partner for diverse industrial needs.

JAKA Zu 20 Technical Specification

General Specification	Payload	20 kg / 44.1 lbs	
	Reach	1780 mm / 70.1 in	
	Degrees of freedom	6 rotating joints	
	Typical power	750 W	
	Operating temperature range	Ambient temperature: 0-50 °C (14-122 °F)	
Movement	Typical TPC speed	1,5 m/s	
	Repeatability	±0,05 mm	
	Axis movement	Working range	Maximum speed
	Joint 1	±360°	120°/s
	Joint 2	-85°-+265°	120°/s
	Joint 3	±175°	120°/s
	Joint 4	-85°-+265°	220°/s
	Joint 5	±360°	220°/s
Joint 6	±360°	220°/s	
Features	Enclosure type	IP 65	
	Mounting	Any orientation	
Physical	Base	Ø246 mm (4 x M12)	
	Material	Aluminum, PVC, steel	
	Cable length(Robot arm)	6 m / 236 inches	
	Weight	65 kg / 149.9 lbs	
	Humidity	10~90% RH	

CAB Specification

Features	Enclosure type	IP 44
	Humidity	10~90%RH
	I/O Ports	/
	Digital In	16
	Digital Out	16
	Analog In	2
	Analog Out	2
	HSI	3
	I/O Power supply	24V,1,5A
	Communication	Modbus,Profinet,Ethernet/IP
Physical	Power source	100-240 VAC, 50-60 Hz
	Size(W x H x D)	410 x 307 x 235 mm / 16.1 x 12.1 x 9.3 in
	Material	Sprayed carbon steel
	Cable length(Control cabinet)	3 m / 118.1 inches
Weight	18 kg / 39.7 lbs	

Palletizing - Efficient and Stable

Faster pace

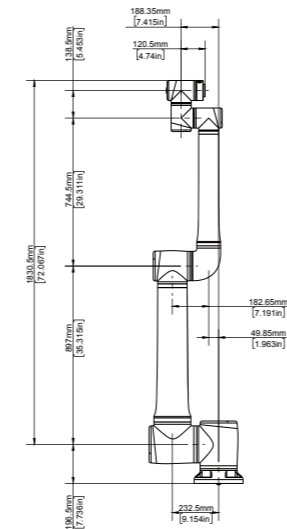
Utilized with the most time optimal trajectory algorithm and joint ratio, Zu 20 achieves top-notch speed.

Reach **3 m/s** — the maximum end speed.

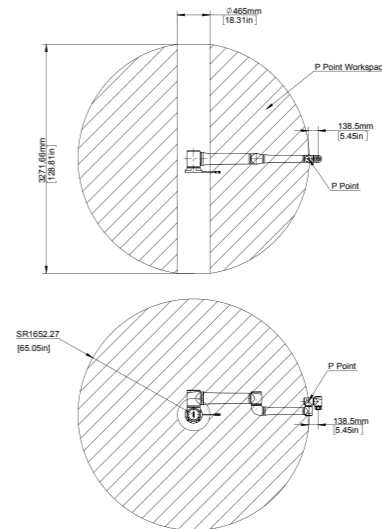
The product is an excellent choice for a wide range of palletizing tasks across various industries, including but not limited to food, beverage, and biomedical sectors.



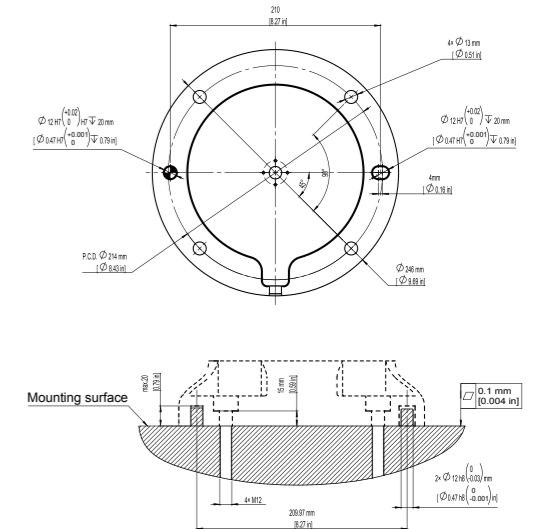
JAKA Zu 20 dimension



JAKA Zu 20 Robot Size



JAKA Zu 20 Workspace



JAKA Zu 20 Base Drawing

Loading and Unloading - Safe and Reliable

Longer Reach

Extending cobot's effective picking space and covering more industry scenarios.

Higher Accuracy

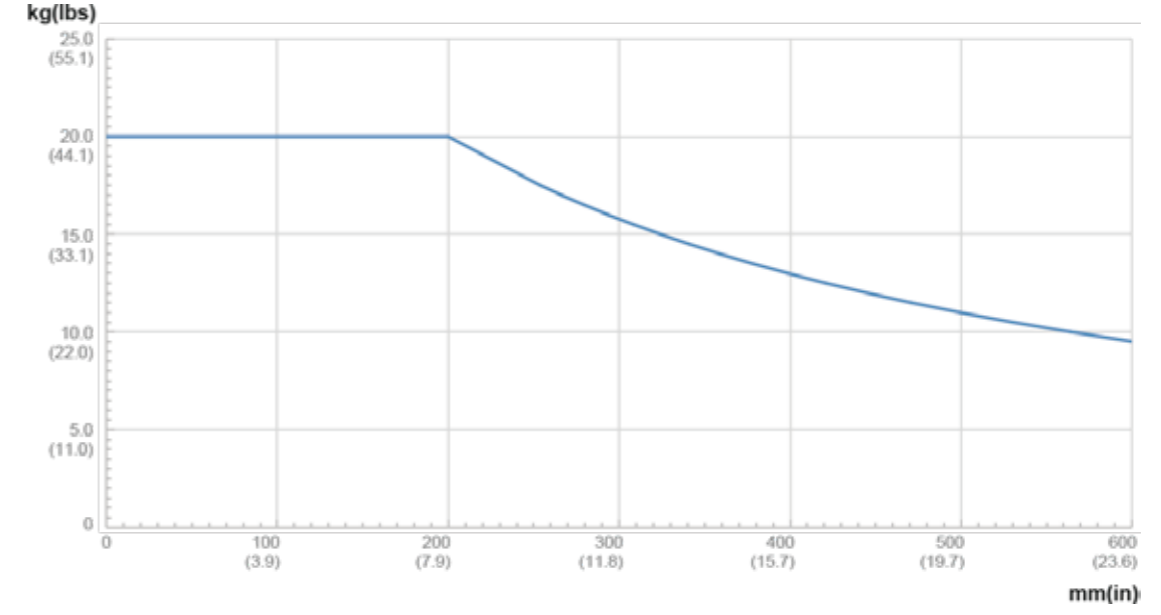
Industry-leading $\pm 0,05$ mm repeatability ensures high-quality production.

Stronger IP-Level

IP65 level of protection against dust and water in loading and unloading scenarios with harsh and complex working conditions.



JAKA Zu 20 payload offset



Handling - Comprehensive Upgrade

Heavier Payload

Suitable for more heavy-duty workpiece scenarios such as automotive drive shaft, gearbox component handling.

More Flexible Assembly

Robots can be mounted in any direction and angle meeting diverse layout needs of the factory.

Simpler Operation

Rich application packages and graphical user interfaces improve worker efficiency.



JAKA Zu 20 flange drawing

