

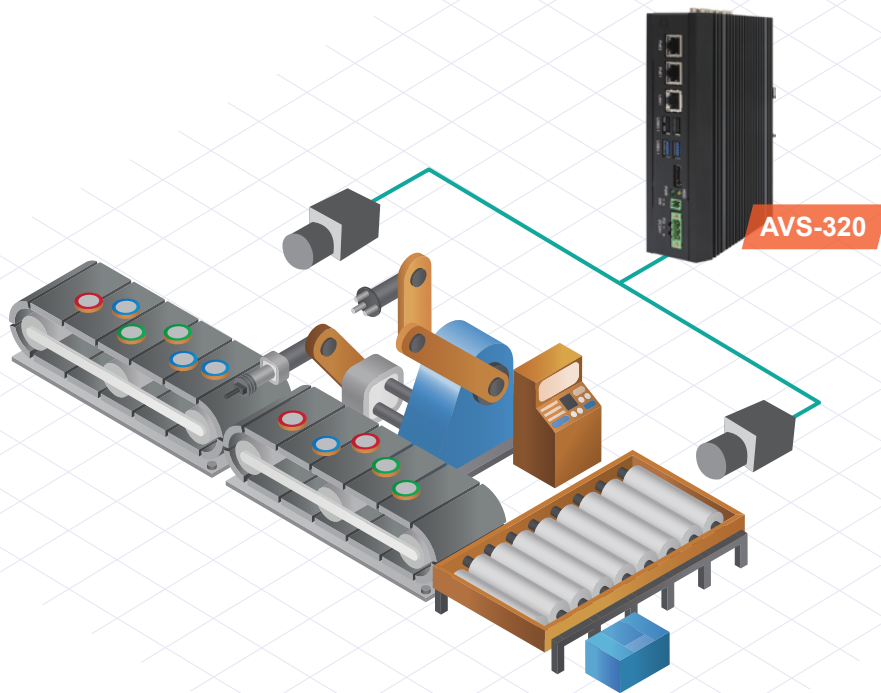
AVS-320

Machine Vision Application for Defect Inspection

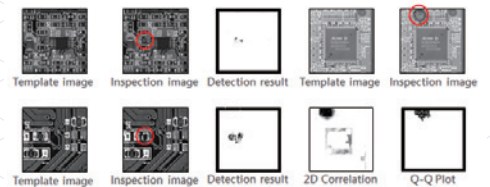
AVS-320 is a Compact and Fanless Space-saving Box PC, Which Consistently Ensures to Manufacture High-quality Products.

Features

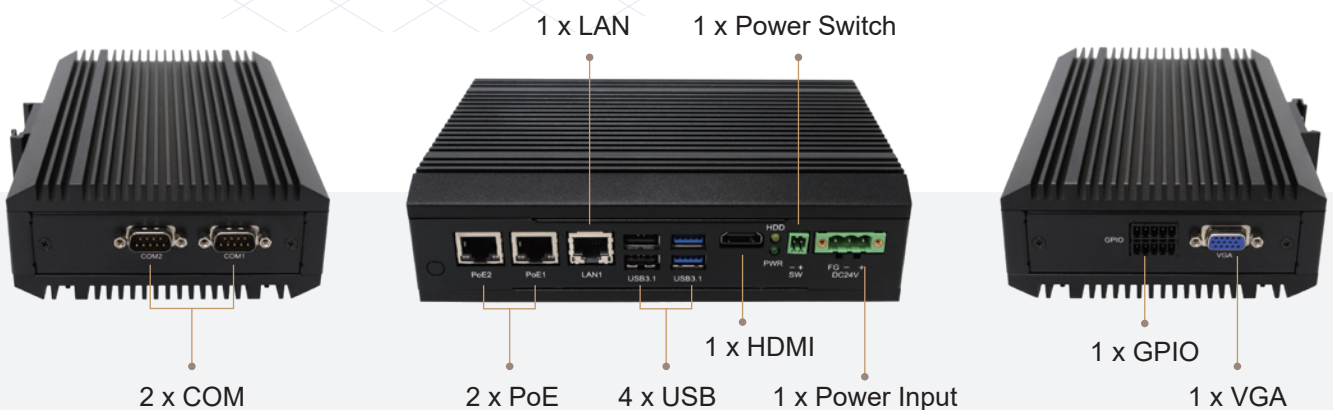
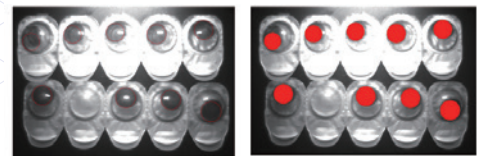
- Intel Elkhart Lake Processor
- DDR4, up to 16GB
- HDMI / VGA Interface
- Dual PoE Ports
- DC 24V Input Only



PCBA Electronic Parts



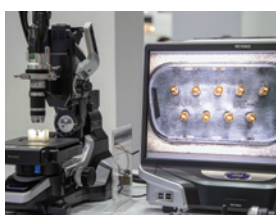
Contact Lens Surface





Specifications

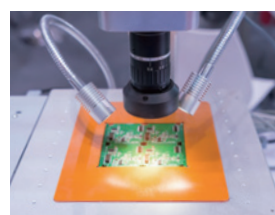
Model	AVS-320
System	
Processor	Intel Celeron J6412 Processor
System Chipset	SoC
System Memory	1 x 260-pin DDR4 SO-DIMM slot, up to 16GB
I/O Port	
USB	2 x USB 3.1 (Type A) stack port 2 x USB 2.0 (Type A) stack port 1 x USB 2.0 (Type A) stack port (internal)
Serial/Parallel	1 x RS-485/RS-232/RS-422, DB9 1 x RS-232, DB9
Display	1 x VGA 1 x HDMI
LAN	1 x GbE ports by RJ-45 with Intel I210-AT 2 x Gigabit IEEE 802.3af/at (15.4W/30W) PoE ports by RJ-45 with Intel I210-AT
Digitl I/O	1 x 8-bit GPIO
Power	1 x DC In 1 x Power Switch Connector
Storage Space	
Storage	1 x SATA 3 Connector (7-pin)
Expansion	
On Board Expansion Bus	1 x M.2 B-Key Socket (USB 3.1 / USB 2.0), 3042/3052 1 x M.2 M-Key Socket (SATA 3), 2242
Others	1 x PCIe-16, 3 x PCIe-4, 2 x PCI
Power	
Power Input	24V DC In
Mechanical	
Construction	Aluminum Heatsink and Steel Chassis
Mounting	DIN rail Mount
Dimension (mm)	180 x 130 x 55 mm
Net Weight (kgs)	1.9 kg
Enviroment	
Operatiing Temperature (°C)	-20~70°C
Storage Temperature (°C)	-40~85°C
Storage Humidity	10 to 90% @ 40°C, non- condensing
Certification	Meet CE/FCC Class A, RoHs
Operating System Support	Windows 10 IoT ENT LTSB



Measurement



Barcode Reading



PCB Inspection



Object Positioning



Fault Detection